

Fort

HOLIDAY PARK

2018
24 Centrally
heated caravans
available

Return car
ferry prices
from £56



A secluded family park with countryside views

Book online at www.fortholidaypark.co.uk



Welcome to Fort Holiday Park



A secluded family park with countryside views...

Set in a central location, the park is within easy level walking distance to all of Sandown's facilities, beach and attractions including the Isle of Wight Zoo, Dinosaur Isle and Sandown Pier.

- For 2018: 24 centrally heated caravans available
- 4 brand new 2018 28'x12' caravans for pitches 1, 2, 3 and 4
- Children's playground with swing, slides and roundabout
- To allow children to play safely, there is a separate large car park, with trolleys provided for your luggage
- Short break from 1 night
- Access Statement available online or by post
- Remember your loyalty discount code when booking online
- Sorry no pets



Find us on Facebook
Fort Holiday Park

Call us now on **01983 402858**
or email enquiries@fortholidaypark.co.uk



www.fortholidaypark.co.uk

Excalibur range

Our Excalibur range of vans are modern, fully double glazed, central heated, winter warm vans. They are situated throughout the park with numbers 6 to 18 giving you an uninterrupted view across the marshland to Culver. Most are equipped with an electric fire in the lounge and have a full size fridge freezer and range cooker.



Excalibur 8 with central heating

No. 32

This 2015 model measures 35' x 12', only one available. Fully central heated with double glazing. The Aurora has a modern and clean looking interior throughout. The lounge has a fixed sofa with pull out sofa bed. The separate dining area features fixed seating, pedestal dining table plus two stools. The kitchen cupboards are handle free in a soft cream finish with laminate style vinyl flooring. There is a shower room, toilet and basin and a separate second toilet and basin. It has one double bedroom and two twin bedrooms.



Excalibur 8 with central heating and bath

No. 29

This 2004 model measures 37' x 12', only one available. Fully central heated this range sleeps eight people in three bedrooms. One double bedroom, two twin bedrooms and a sofa bed in the lounge. This is the only model that boasts a shower over a bath, a wash basin and toilet. The kitchen is equipped with an under counter fridge freezer. The dining room in this van has tables and chairs leading to the lounge which has an electric fire and Freeview TV.



Excalibur range



Excalibur 8 with central heating

Nos. 6-12, 14, 16, 18

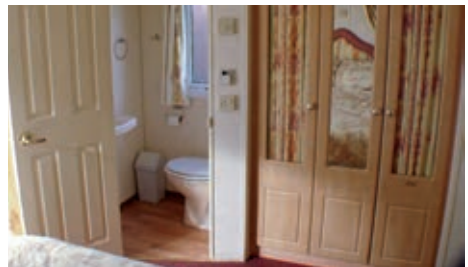
This 2000 model measures 35' x 12' and is one of 10 available. Fully central heated this range sleeps eight people in three bedrooms. One double bedroom, two twin bedrooms and a sofa bed in the lounge. The kitchen is equipped with a full size fridge freezer and range style cooker. The dining room has booth seating leading to the lounge equipped with an electric fire and Freeview TV.



Excalibur 6 with central heating

Nos. 33, 41, 43, 45

This 2000 model measures 35' x 12'. Fully central heated this range sleeps six people in two bedrooms. One double bedroom, one twin bedroom and a sofa bed in the lounge. The double bedroom has an ensuite with a toilet and wash basin. This gives the convenience of a separate bathroom with a shower, wash basin and toilet. The kitchen is equipped with a full size fridge freezer and range style cooker. The dining room in this van has table and chairs. The lounge has an electric fire and Freeview TV.





Excalibur 5 with central heating

Nos. 36, 38, 40

These new additions to our fleet are 2005 models measuring 37'x 12'. Fully central heated and double glazed, this range sleeps five people in three bedrooms. One double bedroom, one twin bedroom and one single bedroom.

The double bedroom has an en-suite with toilet and washbasin. This gives the convenience of a separate bathroom with 1200mm wide shower, washbasin and 2nd toilet. The dining area has table and chairs, the lounge consists of moveable settees with pine fixtures, electric fire and Freeview TV.

Excalibur 4 with central heating and bath

No. 17

Another new addition to our fleet is this 2005 38'x12' two bedroom caravan. This consists of one double bedroom with en-suite toilet, wash basin and 2nd television. A second bedroom has twin beds. It also has a very large bathroom with full size bath, toilet, wash basin and shower cubicle. The lounge can be completely closed off and has free standing settees and large picture front windows and Freeview TV.



Excalibur range - Brand new 2018 caravans



Excalibur 4 with central heating

Nos. 1, 2, 3, 4

These 2018 Willerby Rio Gold models measure 28'x12'. Fully central heated and double glazed with two bedrooms, these are the baby cousins of our best caravan No.32 in a smaller package. They consist of a double bedroom with walk in wardrobe and a twin bedroom, a shower room with a 1200mm wide shower, toilet and wash basin and a large kitchen with full size fridge freezer.





Excalibur 8

Nos. 15, 39

This 2004 range measures 35' x 12' and is one of two available. This range sleeps eight people in three bedrooms. One double bedroom, two twin bedrooms and a sofa bed in the lounge. The bedrooms have electric heaters. There is a bathroom with shower and wash basin. Also a separate cloakroom with wash basin and toilet. The kitchen is equipped with a full size fridge freezer and cooker. The dining room in this van has booth seating. The lounge has an electric fire and Freeview TV.



Excalibur 6

Nos. 37, 44

This 2004 range measures 35' x 12' and is one of two available. This range sleeps six people in two bedrooms. One double bedroom, one twin bedroom and a sofa bed in the lounge. The bedrooms have electric heaters. There is a shower room with toilet and wash basin. No.44 has its only toilet in a separate cloakroom with a basin. The kitchen is equipped with a full size fridge freezer and range style cooker. The dining room in this van has booth seating. The lounge has an electric fire and Freeview TV.



Knight range

The Knight range are our mid-section caravans, much bigger than the Harlequin range and offering slightly higher specifications. They have the advantage of panel heating in the bedrooms as well as the gas fire in the lounge. They are spacious and a popular range with our family groups.



Knight 8 with a central lounge

No's. 30, 31, 34

This 2000 model measures 37' x 12' and is one of three available. This model sleeps a maximum of eight people in three bedrooms. One double, one twin and one bunk bedroom with a sofa bed in the lounge. The double bedroom has an ensuite with shower, hand basin and toilet. This is separated by the open plan kitchen and lounge which lead to the twin bedrooms and another bathroom with shower, hand basin and toilet. This model is equipped with table and chairs in the dining room. The kitchen has the convenience of separate under counter fridge freezer. The lounge is equipped with a gas fire and Freeview TV.

Knight 8 wide

No's. 19, 35, 42

Three slight variations:

- This 2000 model measures 37' x 12' and is one of three available.
- Number 42 is a 2004 model measuring 36' x 12'. This van has a bathroom, shower and hand basin and also a convenient separate toilet and hand basin.

Knight 6 disabled

No. 5  

This 2004 model measures 39' x 12' and is a purpose built disabled van, with only one available. This gets booked up very quickly. It has accessibility throughout the van for a wheelchair with sliding doors and a ramp to ease access inside. This sleeps a maximum of six people in two bedrooms. It has one double bedroom, one twin bedroom and a sofa bed in the lounge. There is a large wet room with shower, toilet and hand basin. It has a galley kitchen with lowered surfaces leading to a dining table with booth seating and some chairs. The lounge is equipped with an electric fire, Freeview TV and access to WiFi. A full accessibility report is available on the website.

Harlequin range

A very popular older range of caravans for the budget conscious. Comfortable 80's caravans, with all the amenities of our larger more expensive ranges. All equipped with everything you would need for a self-catering holiday. These vans serve as a great base to explore the Island without breaking the bank!



Harlequin 2

No. 20

This 1988 model is one of our favourites. At 22' x 10', it has a cosy feel with one double bedroom suitable for a couple or a maximum of two people. Next to the bedroom is the bathroom with a shower, hand basin and toilet. The galley kitchen leads to a dining table with booth seating and a lounge. The lounge is equipped with a gas fire and Freeview TV.



Harlequin 4

No's. 21-23

This 1988 model measures 23' x 10' and is one of three available and can sleep a maximum of four people. It has one double bedroom, a twin room, a bathroom with a shower, hand basin and toilet. The galley kitchen leads to a dining table with booth seating and a lounge. The lounge is equipped with a gas fire and Freeview TV.



No's. 13, 25, 26, 46



No's. 24, 27, 28

Harlequin 4+1

This 1989 model measures 28' x 10' and is one of seven available in varying styles. This range will sleep a maximum of four people and one child. It has one double bedroom and a twin room. The twin bedroom also has a cross bunk across the head of the twin beds which is suitable for a 6 to 12 year old child. There is a bathroom with a shower, hand basin and toilet. The galley kitchen leads to a dining table with booth seating and a lounge. The lounge is equipped with a gas fire and Freeview TV. These are popular with customers who have small mobility problems as caravans 1, 2 and 3 are located close to all amenities.

7 Nights prices

Caravan Type		Harlequin			Knight			
Maximum Occupants (Inc babies)		2	4	4+1	6 wide disabled	8 wide	8 wide central lounge	6 wide
Date		1 bed	2 bed	2 bed	2 bed	3 bed	3 bed	2 bed
Low Season	March 1 to March 23	259	259	259	289	309	339	339
Easter	March 24 to April 13	269	289	329	399	419	429	429
Mid Season	April 14 to May 25	259	259	259	309	339	359	359
Whitsun	May 26 to June 2	299	379	439	539	549	559	559
Mid Season	June 3 to June 22	289	299	349	419	439	449	449
	June 23 to July 6	299	339	409	499	509	529	529
	July 7 to July 20	309	379	439	539	549	559	559
High Season	July 21 to Aug 31	369	529	599	679	689	699	699
Mid Season	Sept 1 to Sept 21	269	289	329	399	419	429	429
Low Season	Sept 22 to Oct 19	259	259	259	289	309	339	339

Any day to any day*

* Monday, Friday or Saturday arrivals/departures only during school summer holidays

Excalibur					Ferry Crossing			
8 wide	4 wide central heating and bath	6 wide central heating	5 wide central heating	8 wide central heating and bath	Red Funnel		Wightlink	
					1-4 nights from	5+ nights from	1-4 nights from	5+ nights from
3 bed	2 bed	2 bed	3 bed	3 bed	1-4 nights from	5+ nights from	1-4 nights from	5+ nights from
349	399	369	389	399	56	68	56	74
439	489	459	479	489	60 (*100)	76 (*128)	60 (*86)	74 (*102)
369	419	389	409	419	60 (*100)	76 (*128)	60 (*86)	74 (*102)
569	619	579	599	619	60 (*100)	76 (*128)	60 (*86)	74 (*102)
459	509	479	499	509	60	76	60 (*104)	74 (*136)
539	589	559	579	589	60	76	60 (*104)	74 (*136)
569	619	589	609	619	60	76	74	94
709	749	719	739	749	68 (*100)	96 (*128)	74 (*120)	94 (*138)
439	489	459	479	489	64	76	74	94
349	399	369	389	399	56	76	56	74

Short breaks

VAT Inclusive

Nights

PRICE	1	2	3	4	5	6
239	82	104	126	154	183	211
249	85	108	132	161	190	220
259	89	113	137	167	198	228
269	92	117	142	174	206	237
279	96	122	147	180	213	246
289	99	126	153	187	221	255
299	103	130	158	193	229	264
309	106	135	163	200	236	273
319	109	139	169	206	244	281
329	113	143	174	213	251	290
339	116	148	179	219	259	299
349	120	152	184	226	267	308
359	123	156	190	232	274	317
369	127	161	195	239	282	326
379	130	165	200	245	290	334
389	133	169	206	251	297	343
399	137	174	211	258	305	352
409	140	178	216	264	313	361
419	144	183	221	271	320	370
429	147	187	227	277	328	378
439	151	191	232	284	336	387
449	154	196	237	290	343	396
459	157	200	243	297	351	405
469	161	204	248	303	358	414
479	164	209	253	310	366	423
489	168	213	258	316	374	431

Nights

PRICE	1	2	3	4	5	6
499	171	217	264	323	381	440
509	175	222	269	329	389	449
519	178	226	274	335	397	458
529	181	230	280	342	404	467
539	185	235	285	348	412	475
549	188	239	290	355	420	484
559	192	244	295	361	427	493
569	195	248	301	368	435	502
579	199	252	306	374	443	511
589	202	257	311	381	450	520
599	205	261	317	387	458	528
609	209	265	322	394	465	537
619	212	270	327	400	473	546
629	216	274	332	407	481	555
639	219	278	338	413	488	564
649	223	283	343	420	496	573
659	226	287	348	426	504	581
669	229	291	354	432	511	590
679	233	296	359	439	519	599
689	236	300	364	445	527	608
699	240	305	369	452	534	617
709	243	309	375	458	542	625
719	247	313	380	465	550	634
729	250	318	385	471	557	643
739	253	322	391	478	565	652
749	257	326	396	484	572	661



Travel to the Isle of Wight

www.redfunnel.co.uk
Tel: 0844 844 9988
Dock 7 in Southampton
to East Cowes
Red Jet - Passenger service
Southampton to West Cowes

www.wightlink.co.uk
Tel: 0871 376 1000
Car ferry
Portsmouth to Fishbourne
Lymington to Yarmouth
FastCat - Passenger service
Portsmouth to Ryde Pier Head

www.hovertravel.co.uk
Tel: 01983 811000
Passenger service
Southsea in Portsmouth
to Ryde Esplanade

Travel to Fort Holiday Park

Once on the Island a number of options are open to you.

Bus Service

Southern Vectis Bus Co.
Tel: 01983 827000
www.islandbuses.info
No. 2 and 3 leave Ryde Esplanade,
with a stop near the park entrance.

Train Service

Ryde to Sandown
www.southwesttrains.co.uk
Walking directions from station:
1. Head south onto Station Avenue
2. Turn left onto Broadway/A3055
3. Turn right onto Carter St
4. Turn left onto Ave Rd/B3329
5. Destination will be on the right

How to book

You can book online on our brand new website: www.fortholidaypark.co.uk and go to 'book online'. This has live availability and allows bookings and all payments, just follow the on screen instructions.

We can also take your bookings over the phone on **01983 402858**
Office hours: 9am to 6pm everyday
(Closed Wednesdays and Sundays from 12pm)

We also accept cheques through the post.

A 25% deposit secures your booking. Balance is due 6 weeks before your holiday.

Our amenities

- WiFi available - payable to 3rd party
- Coin-operated laundry
- Picnic tables for all caravans
- Brick built BBQs
- Digital safes
- Extra showers
- Games room with pool table
- Outdoor table tennis table

All we ask you to bring are towels, matches and your sheets, duvet covers and pillowcases, or we can supply the bed linen at £9 per bed set per stay subject to availability.

Our prices are scaled according to the type of accommodation you require. All gas and electricity (limited to 10A) is included in the price of your holiday.

In walking distance to Fort Holiday Park



Sandham Gardens

Situated next door to us with an 18 hole crazy golf course 18 hole putting green, skate park, childrens playground and outdoor free multi-gym area.

Caulkheads Pub

Fantastic meals with an extensive menu and specials board, large garden and kids play zone.

Sandown Beach

Two minutes walk to the beach where you can swim safely, sunbathe on the golden sands, hire deck chairs and beach huts or take a leisurely stroll along the front to any number of arcades, shops and seaside cafes.

Sandown Pier

Lost World Adventure Golf, Super Bowl 10 pin bowling, Magic Island Play Zone, dodgems and arcades.

Dinosaur Isle

Discover, experience and encounter the lost world of dinosaurs that lived 125 million years ago along with their ancient habitat.

Browns Golf Course & Café

Established 1932 with two 12 hole pitch & putt, 15 hole long shot putting and 18 hole bantam putting.

Isle of Wight Zoo

Some of the world's most beautiful and dangerous creatures including, Royal Bengal tigers, Siberian tigers, Chinese blooded tigers, lions, leopard, black panther and jaguars. Show your key fob or receipt for a discounted entry price.

Heights Leisure Centre

A multi purpose leisure centre providing swimming, squash, tone zone gym, fitness and water classes, bar and bistro. The ideal way to get fit, stay fit and have fun whatever the weather.

Attractions

on the Isle of Wight



The Needles

As soon as you think of the Isle of Wight the iconic image of the world famous chairlift taking you to see the needles rocks and coloured sands spring to mind. The Island's most famous landmark attraction has so much more to enjoy than the stunning views it is a destination not to be missed. The range of attractions includes the spectacular chairlift ride to the beach and the sand cliffs. At the sand shop visitors can make their own unique coloured sand souvenir.



Osborne House

Osborne House, Queen Victoria's family home, is one of the most popular tourist attractions on the Isle of Wight. Highlights include: Victorian opulence and extravagant interiors, stunning Indian décor of the Durbar Room, private apartments including the Queen's bedroom, nursery rooms and royal bathrooms, the Swiss Cottage, extensive grounds - stunning views across the Solent, a Victorian walled garden, hothouses containing exotic plants and a delightful restaurant and café.



Blackgang Chine

Overlooking the stunning South coast of the Island and set in beautiful cliff top gardens, Blackgang Chine offers an enchanting experience like no other. Let your imagination run wild as you venture on a journey of discovery... fighting pirates on-board your own ship, discovering life size moving dinosaurs and escaping from danger, being a sheriff of your own town, rounding up the outlaws and locking 'em up - or experiencing the magic of being fairy princess of your own castle!



Robin Hill Country Park

With free unlimited return visits over a seven day period, award-winning Robin Hill definitely qualifies as one of the Island's favourite country attractions. The park boasts a fantastic blend of rides and adventure play for fun, loving families and children and relaxing woodland gardens, ponds and sculpture walks for discerning adults to enjoy.



IOW Steam Railway

Equally appealing to adults and families, your visit to The Isle of Wight Steam Railway will charm, engage and captivate, leaving you with some lasting memories of a special day out. Step back to a bygone era when steam power was the order of the day. Thrill to the sight and sound of powerful majestic steam engines and breathe in the evocative smells of a real steam railway. Soak-up the rhythm of quiet rural stations while enjoying the friendliness of traditionally uniformed staff.

What's on guide 2018



Isle of Wight Walking Festival - 28 April to 13 May
Wolverton Folk & Blues Fair - 12 May
Walk the Wight - 13 May
Newport Jazz Weekend - 30 May to 3 June
IOW Festival - 21 to 24 June
Round the Island Race - 7 July
Shipwreck Isle - 8 July
Panerai British Classic Week - 14 to 21 July
Isle of Wight Pride - 21 July
Lendy Cowes Week - 4 to 11 August

Ventnor Fringe - 7 to 12 August
Jack Up The 80s - 10 to 12 August
Garlic Festival - 18 to 19 August
International Scooter Rally - 23 to 26 August
Cowes Classic Powerboat Race - 26 August
International Classic Car Show - 15 to 16 September
Isle of Wight Day - 22 September
Sweetcorn Fayre - 29 to 30 September
Isle of Wight Literary Festival - 11 to 14 October
Classic Beer, Buses and Walks - 13 to 14 October

all dates correct at time of printing

Terms and conditions

Please read carefully

Fort Holiday Park

- Whilst on the park please drive carefully - **max 10mph**.
- No naked flames except in the designated BBQs.
- During inclement weather, the park and surrounding areas can get wet and slippery. Please keep to the paths, secure all doors and windows. **You may require use of a torch** as we have minimal lighting for the enjoyment of the night sky.
- Your vehicle and personal belongings are your responsibility during your break with us.
- We reserve the right to enter your caravan at any time for any reasonable purpose, for example, to make checks and maintenance work. Your occupation is not exclusive.
- We are in close proximity to Sandown and its amenities, you may experience some noise from time-to-time. This is beyond our control.
- **All caravans are non-smoking.** This includes smoking in the doorways or out of the windows.
- **No dogs or other pets** are permitted on the park or in the caravans.

Your party

- The number of persons in any caravan (including babies) must not exceed the total number of berths of the caravan booked.
- The caravan must only be used by the people named on your booking form.
- Cross bunks in bedrooms are short, lightweight beds and are for children 6 to 12 years of age only.
- Please make sure your party will fit in the appropriate bed allocated to them by you.
- Not all bedrooms allow space for a cot. Most cot spaces are in the lounge area. Please ring for advice.
- You are not allowed to sublet the accommodation or let anyone else stay without prior approval. Admin charge may apply.
- Any member of the party who has recently suffered from, or been in contact with an infectious disease should seek Doctor's advice prior to beginning their holiday.

- We are a family orientated park, we reserve the right to not accept stag/hen style, or groups where most guests are under 18. If you arrive at the park and we have not been previously informed about the nature of your group you will be turned away without a refund.
- The management is not responsible for accidental personal injury or for loss or damage to you or your party's property.

Bed linen must be used on the beds

- It is **not** supplied in the caravan price.
- Linen packs can be hired at £9 per single or double bed - 7 days notice is required for all linen. This rises to £12 each with less than a 7 day notice or save the cost and bring your own. All subject to availability.
- A £20 charge per bed for duvet, mattress protector and pillow cleaning for failure to use bed linen.

Your optional ferry booking

- Can be booked by ourselves for your convenience and is your responsibility. Please check carefully.
- **Motorcycles - Red Funnel £30, Wightlink £38** return at all times (max 2 people).
- Some crossings we offer have an increased price (*132) on our price list, these increased dates are listed below.

Red Funnel	09.00 – 16.30 hrs (# at all times)
March	30th
April	2nd
May	25th, 26th, 28th
June	#21st, #25th
July	21st, 28th
Aug	4th, 11th, 18th, 24th, 25th, 27th
Sept	1st
Oct	N/A



Wightlink	10.00 - 15.59 hrs
March	30th, 31st
April	2nd
May	7th, 25th, 26th, 28th
June	#21st #25th
July	21st, 28th
Aug	4th, 11th, 18th, 24th, 25th, 27th
Sept	N/A
Oct	N/A

- All optional ferry prices quoted are based on the times booked and subject to availability, with a standard car less than 5.5m (Wightlink 5.0m) long and 2.24m high, with a maximum of 7 persons.
- All vans / pickups will be charged as commercial and not available on our trade rate prices..
- Please arrive 30 minutes before your sailing time to allow for boarding the ferry.
- Additional charges can occur for early or late travel times, fuel surcharges, roof racks, top boxes, bike racks.
- Additional people in vehicle adults £10, children £5
- There is an immediate minimum ferry cancellation charge of £15 (full price at peak times) imposed by the ferry companies.

Arrivals & departures

- On arrival at Fort Holiday Park a credit/debit card will be required for each caravan as a security bond against any of the following: Lost keys, no linen used, damage, smoking inside the caravan, leaving a dirty caravan or late departure.
- **Arrival times are between 3pm and 6pm.**
- Please telephone reception if you are going to be later than 6pm where we can arrange a free key pickup service. We can store suitcases or you can park your car until 3pm if you require. No guests will be permitted to collect their keys after 10pm.

- **All departures by 10am.** The caravan must be left clean and tidy, all items cleaned and replaced in cupboards and all keys returned. Any damage reported and paid for before departure. The caravan will be checked within 24 hours of your departure.
- Late departures will be charged at the brochure rate. Your credit/debit card details will then be deleted.

Payment

- Cheques, postal orders (to Fort Holiday Park) and most credit / debit cards are accepted.
- The balance must be fully paid 6 weeks prior to the start of the holiday.
- You can log-on to our website to pay.
- Failure to pay could result in your holiday being cancelled.

Cancellations

- **Holiday travel and cancellation insurance is highly advisable.**
- The management reserves the right to cancel a booking and refund, any monies paid in the event of any unforeseen circumstances.
- The management has the right to terminate occupation in the event of intolerable nuisance, act of god or damage with no refund or compensation. To cover the cost of processing your cancellation, we make a cancellation charge as follows:

Number of Days	Amount you must pay to us
More than 42 days	Deposit
15 to 41 days	50% of holiday cost or deposit if greater
0 to 14 days	100% Total cost of your holiday

In booking your holiday it is understood that you are over 18 and accept all the above conditions.



Fort Holiday Park
Avenue Road
Sandown
Isle of Wight
PO36 8BD

01983 402858
enquiries@fortholidaypark.co.uk

www.fortholidaypark.co.uk